



TSAILE CAMPUS

PO Box CO6 Tsaile, Arizona 86556

Ph: (928) 724-6730/6731

DIVISION OF STUDENT AFFAIRS

Office of Financial Aid & Scholarships

“The Higher Education Institution of the Navajo’s”



SHIPROCK CAMPUS

PO Box 580 Shiprock, NM 87420

Ph: (505) 368-3511/3515

GETTING STARTED AT DINÉ COLLEGE WITH FINANCIAL AID

2020 – 2021 (July 2020 – June 2021)

APPLY NOW! APPLY TODAY!

Everything you need to apply at Diné' College can be found at www.dinecollege.edu or visit us at the financial aid offices in Tsaile, Shiprock and/or at one of the regional sites.

Step 1: Collect Necessary Documents needed to complete the FAFSA process: [2018 Tax Forms](#)

Step 2: Apply for a Personal Identification Information (FSAID): www.studentaid.gov/fsaid

- Students will need a FSAID to electronically sign their FAFSA
- Parents will need a FSAID, if parent's information is being provided to complete the FAFSA

Step 3: Complete your FAFSA: www.fafsa.ed.gov

- If you are eligible, use the IRS Data Retrieval Tool, which will link you to the IRS website and follow the steps and submit the transfer. Using this system will provide accuracy and save time.
- When asked which college you will be attending, use *Diné College School Code: 008246* (Listed under Arizona)
- Be sure to sign the online FAFSA using your (and your parents') FSAID #(s)
- Print or save your confirmation number

Step 4: Receive Student Aid Report (SAR)

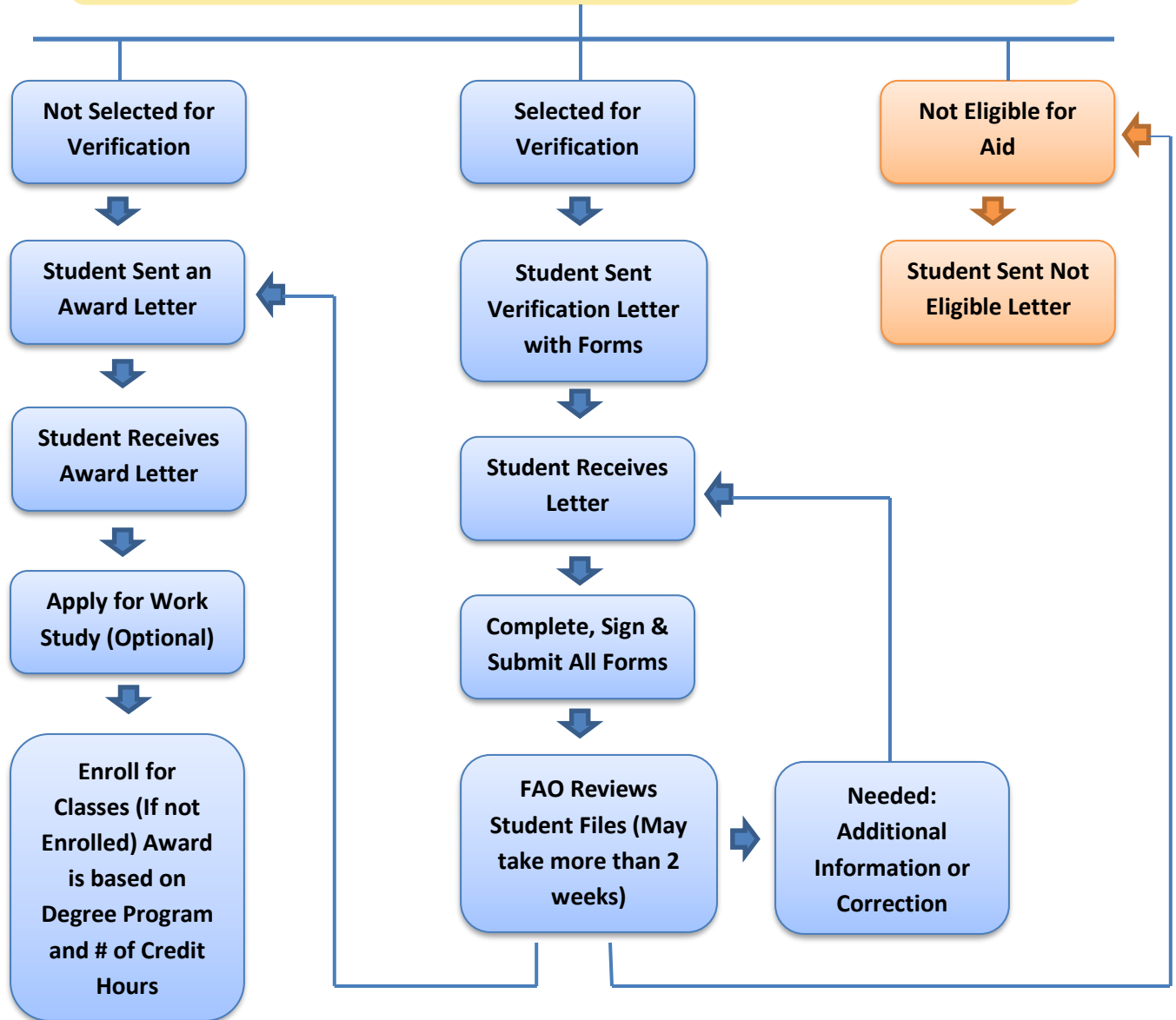
- Student receives the SAR through either email or regular mail
- The college receives an electronic copy in about 5 – 7 days

Step 5: Award Determination and Award letter

Once the SAR is received the following steps take place, depending if the student is or is not selected for a process called “verification” by the Department of Education.



Process of Verification and Award Letter



Receiving a final award can take between 2-4 weeks. If financial aid is not in place, you may be required to pay for fees at your own expense. Financial Aid can be used to reimburse you but it is your responsibility to ensure tuition and books are paid. All steps must be completed, including submission of verifications and /or documents. Keep in mind that checks are issued from the main campus.